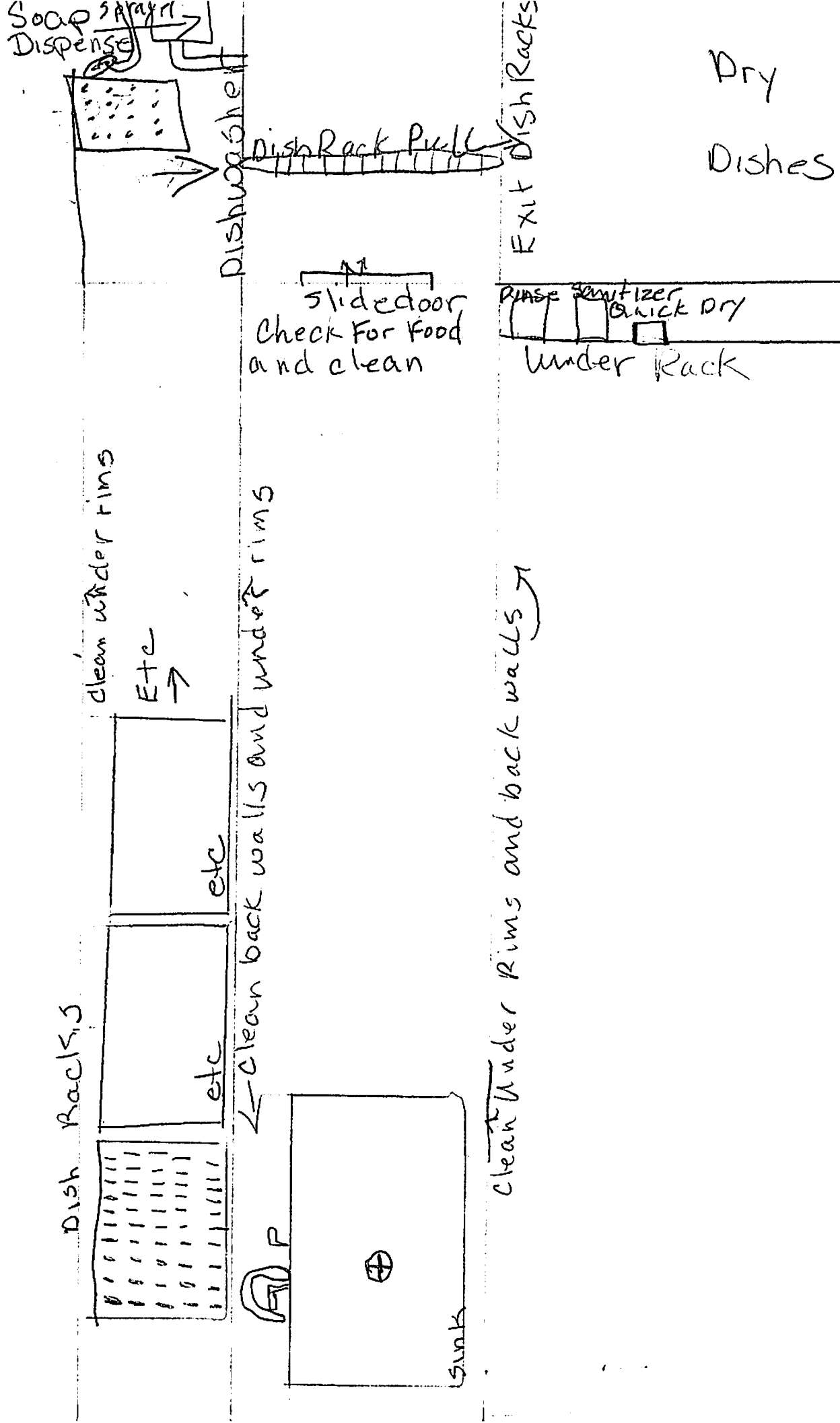


Top wall Dishwashing Area



Soap Dispense

Dish Rack Pull

Dish Rack Pull

Exit Dish Racks

Dry Dishes

slidedoor
Check For Food
and clean

Rinse sanitizer
Quick Dry
Under Rack

clean under rims

Etc

Dish Racks

etc

etc

clean back walls and under rims

P

⊕

sink

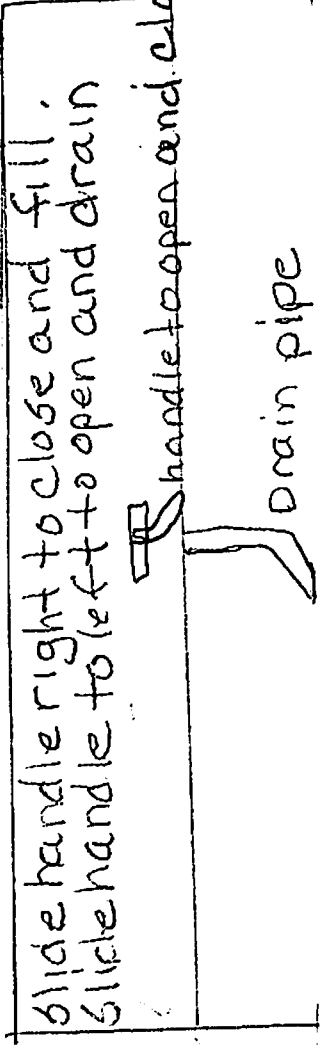
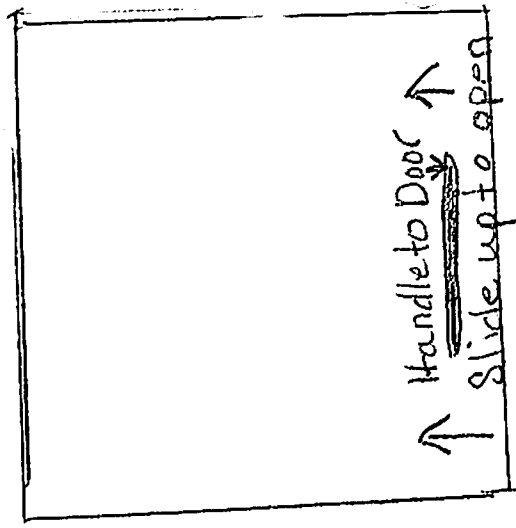
clean Under Rims and back walls

Dishwasher - Machine

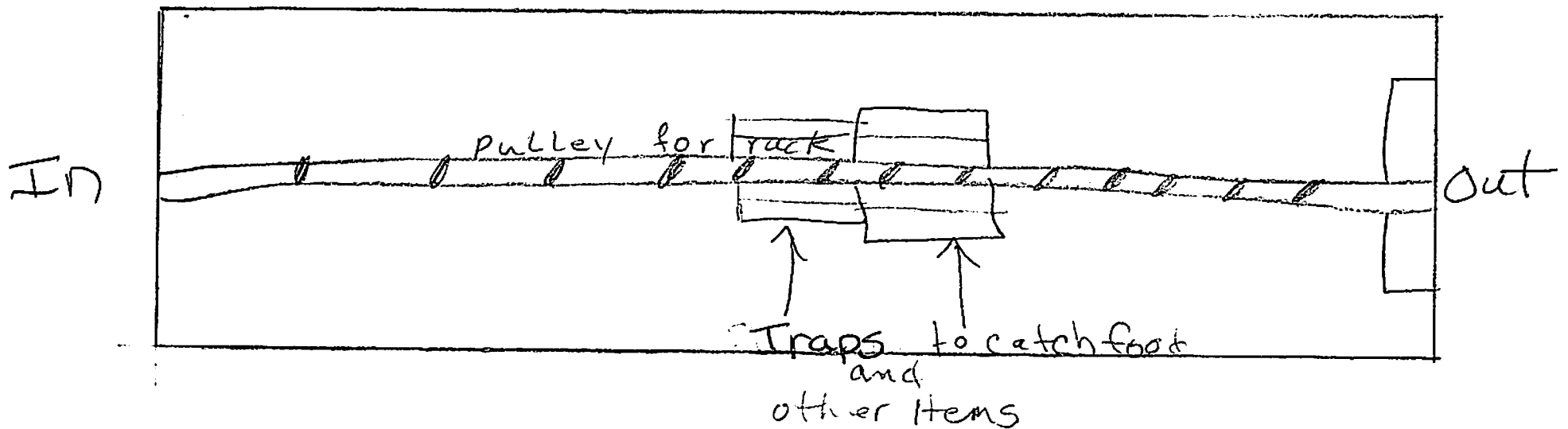
up to turn on



Down to turn off



Inside Dishwasher



- 1) Check food strainers for silverware and other non-food items before pulling strainers out! there is a motor and drain underneath. Failure to remove non-food items can cause damage to motor and cause trap to stay open causing water to run and waste hot water.